

**Material:**

**Housing:** High temperature housing withstands IR and VPR soldering methods.

**Contacts:** Phosphor Bronze.

**Plating:** Gold plated over nickel.  
Tin plated over nickel.

**Electrical Characteristics:**

**Current Rating:** 1 AMP.

**Insulator Resistance:** 5000MΩmin. at DC 500V.

**Contact Resistance:** 20mΩmax. at DC 100mA.

**Operating Temperature:** -65°C~+125°C.

**Max Processing Temperature:** 230°C for 30~60 seconds.

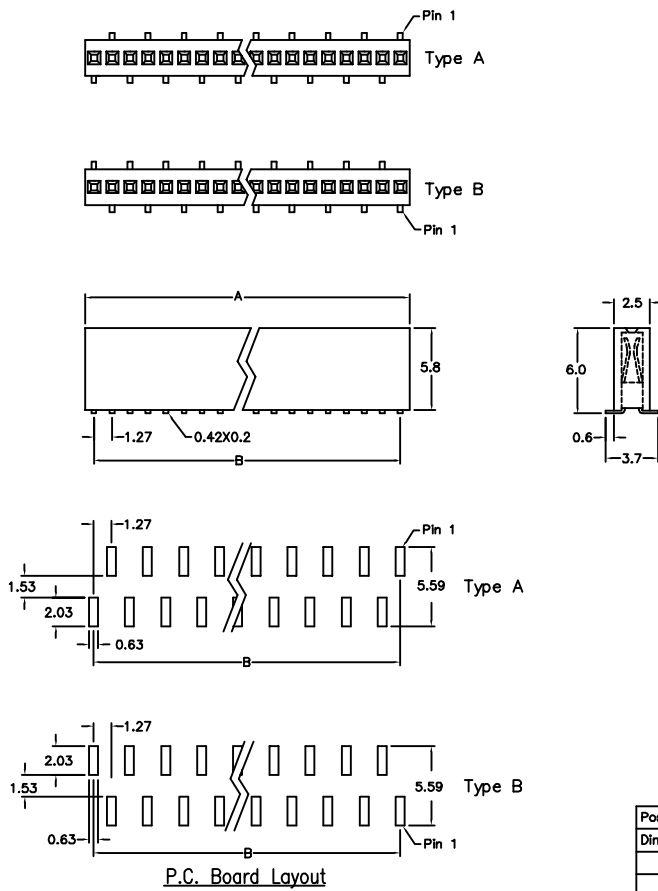
**Mechanical Characteristics:**

**Insertion Force:** 140g avg.(0.46mm sq. pin)

**Withdrawal Force:** 114g avg.(0.46mm sq. pin)

**Features:**

- \* Surface mount.
- \* Low profile 5.80mm(0.228").
- \* Mates with 0.46mm(0.018") square pin.
- \* Choice of two different pin layout.



Position	3 Thru 40
Dimension	
A	1.27 X No. of Positions +0.23
B	1.27 X No. of Positions -1.27

**Ordering information**

PS25- 1 40 1 3 A  
 Series Single Row No. of Pin Per Row 1: Gold Plated 2: Tin Plated 3: Surface Mount \*Foot Print Type A & B